



THOMSON



Friendly Technology



THOMSON



Friendly Technology



THOMSON

Thomson is a historic French brand that has played a major role in the development of global electronics , appliances, and communication technology for more than a century.





Ovens



THOMSON

OVEN 60 CM
TFO60GG-DELUXE



- QG Elegance Model 60cm New Generation Built-In Full Gas Oven as Line Welded Monoblock Oven Cavity, 68 Liters Inner Oven Cavity,
- Stainless Steel Decor Integrated
- Black Glass Panel,
- Internal Cooling Fan System, Made in Italy by Cast Futura Gas Oven & Gas Grill,
- Thermostatic Control, Fry Art (Air Fryer), Turbo Fan - Switch Made in Germany by EGO as Bakalite,
- Corner Oven Lamp, 1 Oven Tray, 1 Chrome Coated High Line Wire Grid, 1 Deep Oven Tray,
- High Density Needled White Glass Wool Insulation (A Class Energy),
- Chrome Wire Rack System, Black Color Enamel Oven Cavity,
- Triple Glass Oven Door as Schott German Technology, Inner Glass as Thermal Reflection (Low-E),
- A Class, Hinges with Highly Rigid Structure, Soft Close System,
- Bottom Matt Stainless Steel Stripe,
- Touch Digital Timer, Power Cable with British Type Plug, Violet Onyx Black Inox Cap Knobs & Eva Stainless Steel Handle.
- 100% ESMA/ECAS Standards.

OVEN 60 CM
TFO60EE10/S-DELUXE



- QX Elegance Model 60cm New Generation Built-In Electrical Oven as Line Welded Monoblock Oven Cavity, 73 Liters Inner Oven Cavity,
- Stainless Steel Decor Integrated Black Glass Panel,
- Internal Cooling Fan System, Up & Down Heating Element, Grill Resistance, Turbo Resistance, Turbo Fan (0+10 Functions) -
- Switch Made in Germany by EGO as Bakalite, Limit Thermostat, Fry Art (Air Fryer), SteamArt (Steam Supported Cooking),
- Corner Oven Lamp, 1 Oven Tray, 1 Deep Oven Tray, 1 Chrome Coated High Line Wire Grid,
- High Density Needled White Glass Wool Insulation (A Class Energy),
- Chrome Wire Rack System, Black Color Enamel Oven Cavity, Triple Glass Oven Door as Schott German Technology,
- A Class Hinges with Highly Rigid Structure, Inner Glass as Thermal Reflection (Low-E), Soft Close System, Bottom Matt Stainless Steel Stripe, Touch Digital Timer,
- Power Cable without Plug, Violet Onyx Black Inox Cap Pop Up Knobs & Eva Stainless Steel Handle,
- 100% G-MARK Approved.

OVEN 60 CM
TFO60EE10/S-DELUXE



- QX Elegance Model 60cm New Generation Built-In Electrical Oven as Line Welded Monoblock Oven Cavity, 73 Liters Inner Oven Cavity,
- Black Glass Panel, Internal Cooling Fan System, Up & Down Heating Element,
- Grill Resistance, Turbo Resistance, Turbo Fan (0+10 Functions) -
- Switch Made in Germany by EGO as Bakalite, Limit Thermostat, Fry Art (Air Fryer),
- SteamArt (Steam Supported Cooking), Corner Oven Lamp, 1 Oven Tray, 1 Deep Oven Tray,
- 1 Chrome Coated High Line Wire Grid, High Density Needled White Glass Wool Insulation (A Class Energy),
- Chrome Wire Rack System, Black Color Enamel Oven Cavity,
- Triple Glass Oven Door as Schott German Technology,
- A Class Hinges with Highly Rigid Structure, Inner Glass as Thermal Reflection (Low-E), Soft Close System, Bottom Matt Stainless Steel Stripe,
- Touch Digital Timer, Power Cable without Plug, Violet Onyx Black Color Inox Cap Pop Up Knobs & Eva Stainless Steel Handle,
- 100% G-MARK Approved.

OVEN 60 CM
TFO60GG-DELUXE



- QG Elegance Model 60cm New Generation Built-In Full Gas Oven as Line Welded Monoblock Oven Cavity, 68 Liters Inner Oven Cavity,
- Black Glass Panel, Internal Cooling Fan System
- Made in Italy by Cast Futura Gas Oven & Gas Grill, Thermostatic Control,
- Fry Art (Air Fryer), Turbo Fan - Switch Made in Germany by EGO as Bakalite,
- Corner Oven Lamp, 1 Oven Tray, 1 Chrome Coated High Line Wire Grid, 1 Deep Oven Tray,
- High Density Needled White Glass Wool Insulation (A Class Energy),
- Chrome Wire Rack System, Black Color Enamel Oven Cavity, Triple Glass Oven Door as Schott German Technology,
- Inner Glass as Thermal Reflection (Low-E),
- A Class Hinges with Highly Rigid Structure, Soft Close System, ,
- Touch Digital Timer, Power Cable with British Type Plug, Violet Onyx Black Inox Cap Pop up Knobss & Eva Stainless Steel Handle,
- 100% ESMA/ECAS Standards.

OVEN 90 CM
TFO90GG/DELUXE

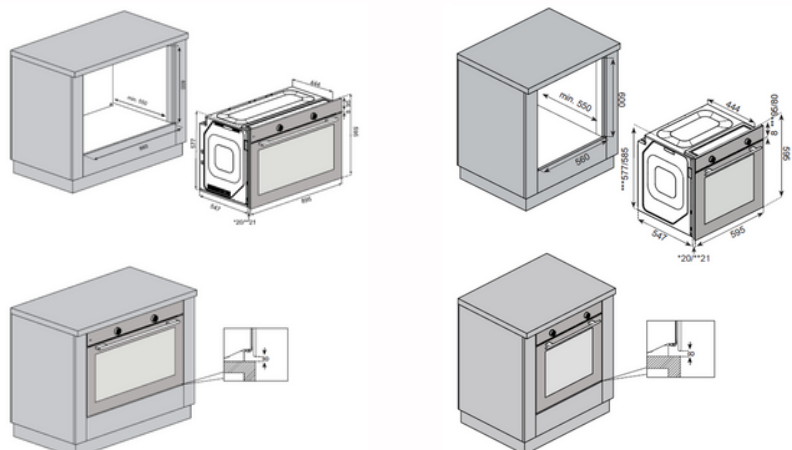


- QGDMD 922 MI Model 90cm New Generation Built-In Full Gas Oven as Line Welded Monoblock
- Oven Cavity, 118 Liters
- Inner Oven Cavity, Matt Stainless Steel Control Panel, Internal Cooling Fan System,
- Made in Italy by Cast Futura Gas Oven & Gas Grill,
- Thermostatic Control, Fry Art (Air Fryer), Turbo Fan - Switch Made in Germany by EGO as Bakalite,
- 2 Oven Lamps, 1 Oven Tray, 1 Chrome Coated High Line Wire Grid, 1 Deep Oven Tray,
- High Density Needled White Glass Wool Insulation (A Class Energy),
- Chrome Wire Rack System, Black Color Enamel Oven Cavity,
- Triple Glass Oven Door as Schott German Technology,
- Inner Glass as Thermal Reflection (Low-E), A Class Hinges with Highly Rigid Structure,
- Bottom Matt Stainless Steel Stripe, Soft Close System, Touch Digital Timer, Power Cable with British Type Plug, Mila A Model Natural Black Knobs & Mila Anodized Magic Silver Aluminium Handle,
- 100% ESMA/ECAS Standards.

OVEN 90 CM
TFO90EE10/S-DELUXE



- QX Diamond Model 90cm New Generation Built-In Electrical Oven as Line Welded Monoblock
- Oven Cavity, 118 Liters Inner Oven Cavity,
- Matt Stainless Steel Control Panel, Internal Cooling Fan System, Up & Down Heating Element, Grill Resistance, Turbo Resistance, Triple Turbo Fans (0+10 Functions) -
- Switch Made in Germany by EGO as Bakalite, Limit Thermostat, Fry Art (Air Fryer), SteamArt (Steam Supported Cooking),
- 2 Oven Lamps, 1 Oven Tray, 1 Deep Oven Tray, 1 Chrome Coated High Line Wire Grid,
- High Density Needled White Glass Wool Insulation (A Class Energy), Chrome Wire Rack System, Black Color Enamel Oven Cavity,
- Triple Glass Oven Door as Schott German Technology,
- A Class Hinges with Highly Rigid Structure, Inner Glass as Thermal Reflection (Low-E),
- Soft Close System, Bottom Matt Stainless Steel Stripe, Touch Digital Timer,
- Power Cable without Plug, Violet Inox Cap Pop Up Knobs & Eva Stainless Steel Handle.
- 100% G-MARK Approved.

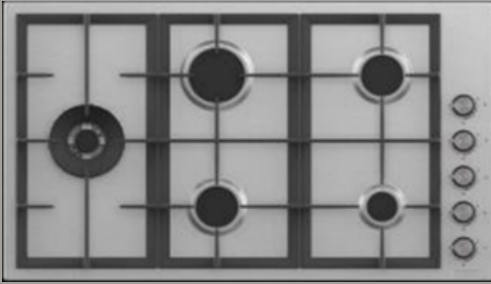




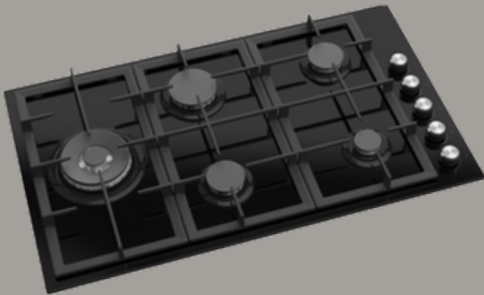
Hobs



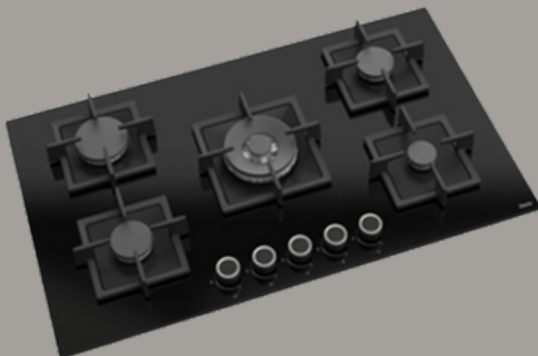
THOMSON

TFH9G5/STEEL


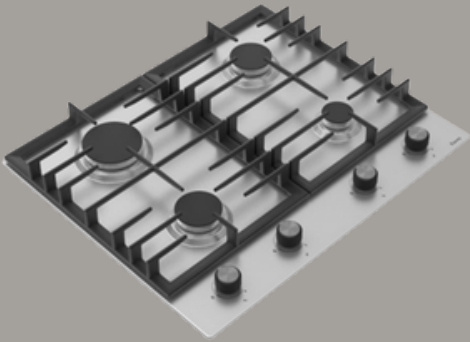
- **BL Series 90cm Built-In Gas Hob**, 5 Gas Euro Type Pool Burners,
- Left Dual Wok Burner as 5 kW by Sabaf Made in Italy, All Burners are SABAF,
- Flame Failure Devices for Top 5 Gas Burners (FULL SAFETY), Cast Iron Pan Supports, Round Cast Iron Pan Adaptor, 4mm Matt and Flat Burners Caps
- , Stainless Steel Cover P-016 Model Side Knobs,
- One Hand Integrated Automatic Igniton, British Type Plug & Power Cable, Matt Stainless Steel Body,
- A Class Packing,
- 100% ESMA/ECAS Standards.

TFH9G5/BLACK BLSeries


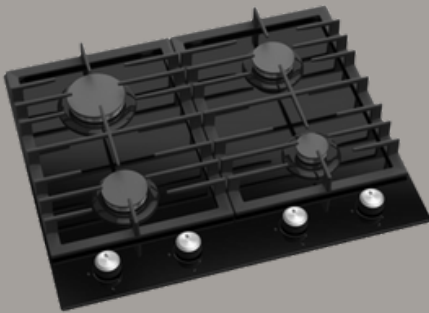
- **BL Series 90cm Built-In Gas Hob**, 5 Gas Euro Type Pool Burners,
- Left Dual Wok Burner as 5 kW by Sabaf Made in Italy, All Burners are SABAF,
- Flame Failure Devices for Top 5 Gas Burners (FULL SAFETY),
- Cast Iron Pan Supports, Round Cast Iron Pan Adaptor, 4mm Matt and Flat Burners Caps, Stainless Steel Cover P-016 Model Side Knobs,
- One Hand Integrated Automatic Igniton, British Type Plug & Power Cable, 8mm Tempered Black Glass,
- A Class Packing,
- 100% ESMA/ECAS Standards.

TFH9G5/BLACK SC Series


- **SC Series 90cm Built-In Gas Hob**, 5 Gas Euro Type Pool Burners,
- Central Dual Wok Burner as 5 kW by Sabaf Made in Italy, All Burners are SABAF,
- Flame Failure Devices for Top 5 Gas Burners (FULL SAFETY),
- Cast Iron Pan Supports, Round Cast Iron Pan Adaptor, 4mm Matt and Flat Burners Caps, Stainless Steel Cover
- P016 model Frontal Knobs, One Hand Integrated Automatic Igniton, British Type Plug & Power Cable, 8mm Tempered Black Glass,
- A Class Packing
- 100% ESMA/ECAS Standards.

TFH6G4/STEEL

- **BE Series 60cm Built-In Gas Hob**, 4 Gas Euro Type Pool Burners,
- All Burners are SABAF, Flame Failure Devices for Top 4 Gas Burners (FULL SAFETY),
- Cast Iron Pan Supports, 4mm Matt and Flat Burners Caps,
- Stainless Steel Cover P016 model Frontal Knobs,
- One Hand Integrated Automatic Igniton, British Type Plug & Power Cable, Matt Stainless Steel Body,
- A Class Packing,
- 100% ESMA/ECAS Standards.

TFH6G4/BLACK

- **BE Series 60cm Built-In Gas Hob**, 4 Gas Euro Type Pool Burners,
- All Burners are SABAF, Flame Failure Devices for Top 4 Gas Burners (FULL SAFETY),
- Cast Iron Pan Supports, 4mm Matt and Flat Burners Caps, Stainless Steel Cover P-016 Model Frontal Knobs,
- One Hand Integrated Automatic Igniton, British Type Plug & Power Cable, 8mm Tempered Black Glass,
- A Class Packing,
- 100% ESMA/ECAS Standards.

TFH6G4/BLACK

- **LN Series 60cm Built-In Gas Hob**, 4 Gas Euro Type Pool Burners,
- All Burners are SABAF, Flame Failure Devices for Top 4 Gas Burners (FULL SAFETY),
- Cast Iron Pan Supports, 4mm Matt and Flat Burners Caps, Stainless Steel Cover P-016 Model
- Frontal Knobs, One Hand Integrated Automatic Igniton, British Type Plug & Power Cable,
- 8mm Tempered Black Glass, A Class Packing,
- 100% ESMA/ECAS Standards.

TFH3G2/STEEL


- **ED Series 30cm Built-In Gas Hob**, 2 Gas Euro Type Pool Burner, All Burners are SABAF,
- Flame Failure Device for Top Gas Burners (FULL SAFETY),
- Cast Iron Pan Support, 4mm Matt and Flat Burner Cap, Stainless Steel Cover P-016 Model Frontal Knobs,
- One Hand Integrated Automatic Ignition, British Type Plug & Power Cable, Matt Stainless Steel Body,
- A Class Packing,
- 100% ESMA/ECAS Standards.

TFH3G2/BLACK

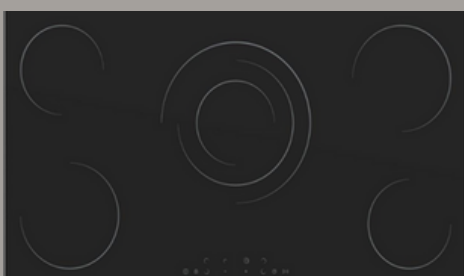

- **ED Series 30cm Built-In Gas Hob**, 2 Gas Euro Type Pool Burner, All Burners are SABAF,
- Flame Failure Device for Top Gas Burners (FULL SAFETY),
- Cast Iron Pan Support, 4mm Matt and Flat Burner Cap, Stainless Steel Cover P-016 Model Frontal Knobs,
- One Hand Integrated Automatic Ignition, British Type Plug & Power Cable, 8mm Tempered Black Glass
- A Class Packing,
- 100% ESMA/ECAS Standards.

TFH3V2TF/SF


- **30cm Built-In Vitroc ceramic (Highlight)** Electrical Hob, 2 Highlight Cooking Zones,
- Frontal Zone as 1.2 kW, Rare Zone as 1.8 kW Power, 10 Power Levels, Easy Dial Touch Control,
- Easy Clean Smooth Surface, Child Safety Lock, Frontal Stainless Steel Stripes, 1mm Power Cord without Plug,
- 100% CE & G-MARK Approved.

TFH6V4TF/SF


- **60cm Built-In Vitroc ceramic (Highlight)** Electrical Hob,
- 4 Highlight Cooking Zones, 2 Zones as 1.2 kW, 2 Zones as 1.8 kW Power, 10 Power Levels,
- Easy Dial Touch Control, Easy Clean Smooth Surface, Child Safety Lock,
- Frontal Stainless Steel Stripes, 1mm Power Cord without Plug,
- 100% CE & G-MARK Approved.

TFH9V6TF/SF


- **90cm Built-In Vitroc ceramic (Highlight)** Electrical Hob,
- 5 Highlight Cooking Zones, 2 Zones as 1.2 kW, 2 Zones as 1.8 kW Power, 1 Zone 2.7 kW Power, 10 Power Levels,
- Easy Dial Touch Control, Easy Clean Smooth Surface, Child Safety Lock,
- Frontal Stainless Steel Stripes, 1mm Power Cord without Plug,
- 100% CE & G-MARK Approved.



Hoods



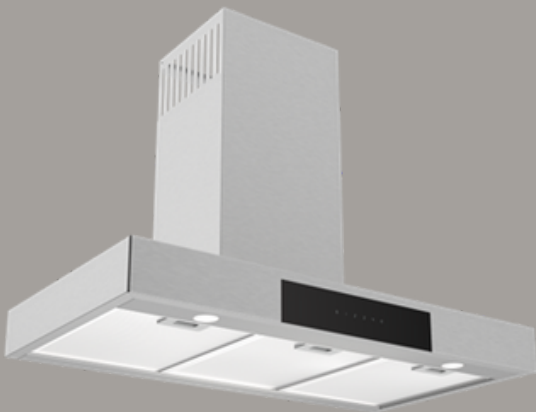
THOMSON

HOOD
TFDT60BG/BLACK



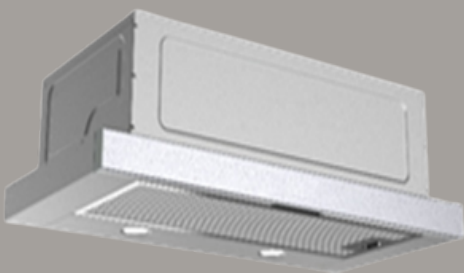
- 60cm Big Body Chimney Hood.
- T Design Matt Black Metal Body.
- Touch Control, 1x220 Watt Power Copper Wire Winding Motor.
- 850 m³/h Suction Power, 65 dB Noise Level, 3 Speed Levels.
- Double Vented Syst, Diameter of air outlet 150mm Air Outlet.
- Matt Black 2 Chimnies, Chimney Length 360mm.
- 5 Layer Black Color Aluminium Filters.
- 2 Pieces LED Lamp as 1 Watt Each One.
- 220-240 V/ 50-60 Hz, British Type Plug.
- Foam Supported Carton Box Packing.

HOOD
TFDT90TB/STEEL



- 90cm Big Body Chimney Hood.
- T Design Matt Stainless Steel Body.
- Black Tempered Glass Touch Control Panel.
- 1x240 Watt Power Copper Wire Winding Motor (S40), 1.000 m³/h Suction Power.
- 59 dB Noise Level, 3 Speed Levels.
- Double Vented Syst, Diameter of air outlet 150mm Air Outlet.
- Matt Stainless Steel 2 Chimnies.
- Chimney Length 330mm.
- 5 Layers Aluminium Filters.
- 2 Pieces LED Lamp as 1 Watt Each One.
- 220-240 V/ 50-60 Hz, British Type Plug.
- Foam Supported Carton Box Packing.

HOOD
TFCH60/STEEL



- 60cm Cooker Hood.
- Matt Stainless Steel Control Panel.
- Rocker Type Control, 1X100 Watt Motor (K25).
- Copper Wrapping Motor.
- 300m³/h Suction Power.
- 59 dB Sound Level, 2 Speeds Levels.
- 120mm Exhaust Diameter.
- 3 Layers Aluminum Filter.
- 1 Watt X 2 LED Lamps.
- Fireproof Plastic Parts.
- 220-240 V/ 50-60 Hz.
- British Type Plug and Power Cable.
- Polyfoam Supported Carton Box Packing.

HOOD
TFDP60/STEEL



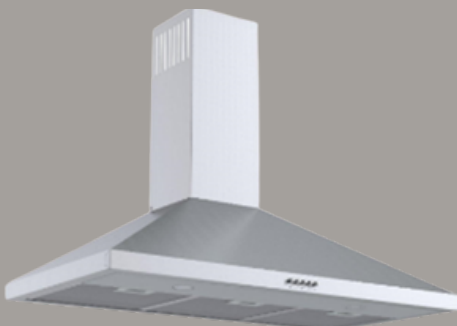
- 60cm Big Body Chimney Hood.
- Pyramid Design Matt Stainless Steel Body.
- Push Button Control.
- 1x220 Watt Power Copper Wire Winding Motor.
- 850 m³/h Suction Power.
- 59 dB Noise Level, 3 Speed Levels.
- Double Vented Syst, Diameter of air outlet 150mm Air Outlet.
- Matt Stainless Steel 2 Chimnies.
- Chimney Length 360mm.
- 5 Layers Aluminium Filters.
- 2 Pieces LED Lamp as 1 Watt Each One.
- 220-240 V/ 50-60 Hz.
- British Type Plug.
- Foam Supported Carton Box Packing.

HOOD
TFDT60/BLACK



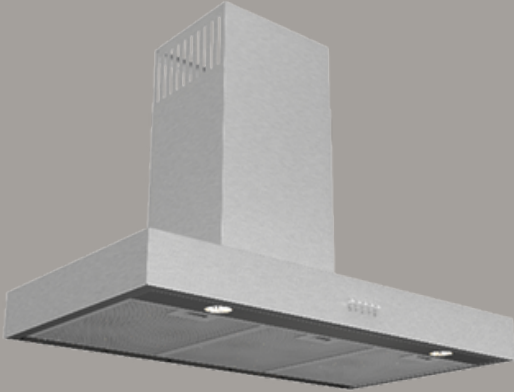
- 60cm Big Body Chimney Hood.
- T Design Matt Black Metal Body.
- Push Button Control.
- 1x220 Watt Power Copper Wire Winding Motor.
- 850 m³/h Suction Power.
- 65 dB Noise Level, 3 Speed Levels.
- Double Vented Syst.
- Diameter of air outlet 150mm Air Outlet.
- Matt Black 2 Chimnies.
- Chimney Length 360mm.
- 5 Layer Aluminium Filters.
- 2 Pieces LED Lamp as 1 Watt Each One.
- 220-240 V/ 50-60 Hz.
- British Type Plug.
- Foam Supported Carton Box Packing.

HOOD
TFDP90/STEEL



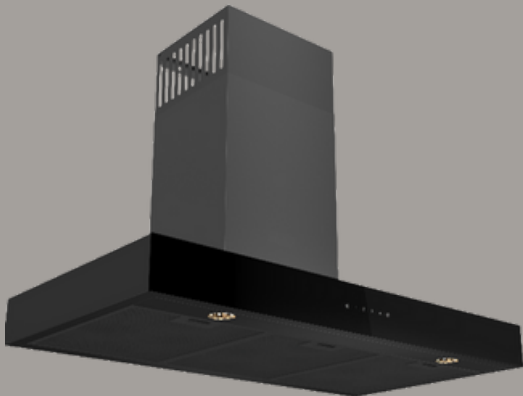
- 90cm Big Body Chimney Hood.
- Pyramid Design Matt Stainless Steel Body.
- Push Button Control.
- 1x240 Watt Power Copper Wire Winding Motor (S40).
- 1000 m³/h Suction Power.
- 59 dB Noise Level, 3 Speed Levels.
- Double Vented Syst.
- Diameter of air outlet 150mm Air Outlet.
- Matt Stainless Steel 2 Chimnies.
- Chimney Length 330mm.
- 5 Layer Aluminium Filters.
- 2 Pieces LED Lamp as 1 Watt Each One.
- 220-240 V/ 50-60 Hz.
- British Type Plug.
- Foam Supported Carton Box Packing.

HOOD
TFDT90/STEEL



- 90cm Big Body Chimney Hood.
- T Design Matt Stainless Steel Body.
- Push Button Control.
- 1x240 Watt Power Copper Wire Winding Motor (S40).
- 1000 m³/h Suction Power.
- 59 dB Noise Level.
- 3 Speed Levels.
- Double Vented Syst.
- Diameter of air outlet 150mm Air Outlet.
- Matt Stainless Steel 2 Chimnies.
- Chimney Length 330mm.
- 5 Layers Aluminium Filters.
- 2 Pieces LED Lamp as 1 Watt Each One.
- 220-240 V/ 50-60 Hz.
- British Type Plug.
- Foam Supported Carton Box Packing.

HOOD
TFDT90/BLACK



- 90cm Big Body Chimney Hood.
- T Design Matt Black Metal Body.
- Black Tempered Glass Touch Control Panel.
- 1x240 Watt Power Copper Wire Winding Motor (S40).
- 1000 m³/h Suction Power.
- 59 dB Noise Level, 3 Speed Levels.
- Double Vented Syst
- Diameter of air outlet 150mm Air Outlet.
- Matt Black Metal 2 Chimnies.
- Chimney Length 330mm.
- 5 Layers Black Color Aluminium Filters.
- 2 Pieces LED Lamp as 1 Watt Each One.
- 220-240 V/ 50-60 Hz.
- British Type Plug.
- Foam Supported Carton Box Packing.

Regolo



Finish



Acciaio inox satinato
Stainless steel satin

Features

Size
52/85/100 cm
Version
Aspirante / Filtrante (opzionale solo sul modello standard)
Suction / Filtering (optional only standard model)
Controls
Electronic 3+1
Lighting
Fascia led dimmerabile/dinamica
Dimmable/Dynamic led strip
1x5,3W (52/85)
1x9,2W (100)

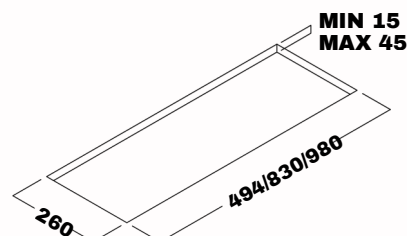
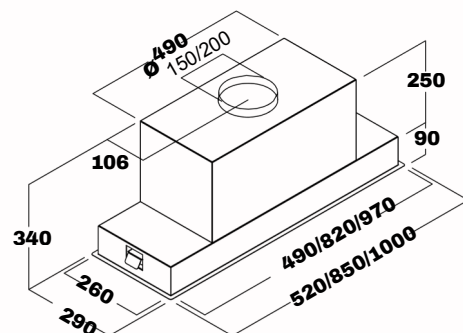
Accessories

Coppia filtro long life rotondo (solo modello standard)
Pair round long life filters (only standard model)
R55046221

Performance

Airflow
780 m³/h (standard)
1150 m³/h (pro)
Pressure
590 Pa (standard)
600 Pa (pro)
Noise level
46 Min / 66 max lw[dba] (standard)
56 Min / 66 max lw[dba] (pro)
Motor power
265 W (standard)
450 W (pro)
Duct Size
Ø 150 mm (standard)
Ø 200 mm (pro)
Energy Class
A (standard)
B (pro)

Professional filter



Model

REGOLO 52
REGOLO 85
REGOLO 100

Model

REGOLO 52 PRO
REGOLO 85 PRO
REGOLO 100 PRO



WASHING & DRYING



THOMSON

WASHING MACHINE

TAD912S



Features

- Washing machine 9Kg LCD display
- Spin max 1200 rpm
- Energy efficiency class: D Class
- Programs: 15+4 washing options
- Water consumption per cycle: 42 Lt
- Energy consumption per cycle: 0,92 KW/H
- Drum volume: 65 Lt
- Door opening Angle: 180°
- Door diameter: 48 cm
- Noise level: 51.5 dbA
- Eco function: yes
- Anti-foam control: yes
- Filter pump inspection
- Adjustable feet
- Digital display
- Blue colour display
- Fault indicator
- Baby lock
- Over heating control
- Over flow control
- Loading quantity 40 HC: 168 PCS

WASHING MACHINE

TAD1012S



Features

- Washing machine 10Kg LCD display
- Spin max 1200 rpm
- Energy efficiency class: D class
- Programs: 15 + 4 washing options
- Water consumption per cycle: 45 Lt
- Energy consumption per cycle: 0,78 KW/H
- Drum volume: 71 Lt
- Door opening Angle: 160°
- Door diameter: 48 cm
- Noise level: 75 dbA
- Eco function: yes
- Anti-foam control: yes
- Filter pump inspection
- Adjustable feet
- Digital display
- Blue colour display
- Fault indicator
- Baby lock
- Over heating control
- Over flow control
- Loading quantity (40 HC): 168 pcs

WASHING MACHINE

TG610S



Features

- Washing machine 6 Kg Led display
- Spin max 1000 Rpm
- Energy efficiency class: C Class
- Programs: 15+3 washing options
- Water consumption per cycle: 30 Lt
- Energy consumption per cycle: 0,54 KW/H
- Drum volume: 42 Lt
- Door opening angle: 180°
- Drum diameter: 47 cm
- Noise spin dryer level: 79 dbA
- Eco function: yes
- Anti-foam control: yes
- Filter pump inspection
- Adjustable feet
- LED technology
- Red indicator
- Fault indicator
- Child safety
- Over heating control
- Over flow control
- Loading quantity 40 HC: 200 pcs

WASHING MACHINE

TG610S



Features

- Washing machine 7Kg LCD display
- Spin max 1400 rpm
- Energy efficiency class: B class
- Programs: 15 + 3 washing options
- Water consumption per cycle: 33 Lt
- Energy consumption per cycle: 1,03 KW/H
- Drum volume: 48 Lt
- Door opening Angle: 160°
- Door diameter: 48 cm
- Noise level: 76 dbA
- Eco function: yes
- Anti-foam control: yes
- Filter pump inspection
- Adjustable feet
- Digital display
- Blue colour display
- Fault indicator
- Baby look
- Over heating control
- Over flow control
- Loading quantity (40 HC): 177 pcs

WASHING MACHINE

TDG68DL



Features

- 8 Kg washing / 6 Kg dryer
- Spin speed (rpm) max. 1400
- Drum volume (Lt): 60
- Max load capacity (Kg) (washing): 8 Kg
- Max load capacity (Kg) (drying): 6 Kg
- LCD Display
- Capacitive touch buttons
- Motor type DC
- Overflow protection
- Door lock indicator
- Washing cycle indicator
- Delay time adjustment via button
- 7 segment LED
- Door diameter: 47 cm
- Pump with filter
- Drum material stainless steel
- Adjustable feet
- Energy efficiency: A
- Washing efficiency: A
- Voltage (V)/frequency (Hz): 220-240 V/50 Hz
- Power rating (W): 2200
- Packed dimensions (shrink) (HxWxD) (cm): 88,1x64,1x66
- Net weight (Kg): 78,5
- Loading quantity (40 HC): 159 pcs

WASHING MACHINE

TW12S



Features

- Washing Machine: 12Kg
- Drum volume: 69 L
- Black outer door ring
- Giant door Ø51 with PC cover
- Door diameter: 51 cm
- Dark silver color
- Spin speed: 1200 rpm
- Motor type: inverter
- Eco logic
- Unbalance control
- Overflow protection
- Control System: electronic
- Child lock
- Display LED (7-segment)
- Remaining time
- Programs: 15
- Extra functions: temperature setting, spin speed setting, delay time setting
- Pump with filter
- Drum material: stainless steel
- Voltage/frequency: 220-240V/50-60 Hz
- Power rating: 2200W
- Container loading quantity (40HC): 153pcs

WASHING MACHINE TW8S



Features

- Washing Machine: 8Kg
- Drum volume: 55 L
- Black outer door ring
- Giant door Ø51 with PC cover
- Door diameter: 51 cm
- Dark silver color
- Spin speed: 1200 rpm
- Motor type: inverter
- Eco logic
- Unbalance control
- Overflow protection
- Control System: electronic
- Child lock
- Display LED (7-segment)
- Remaining time
- Programs: 15
- Extra functions: temperature setting, spin speed setting, delay time setting
- Pump with filter
- Drum material: stainless steel
- Voltage/frequency: 220-240V/50-60 Hz
- Power rating: 2200W
- Container loading quantity (40HC): 153pcs

DRYER TD92



Features

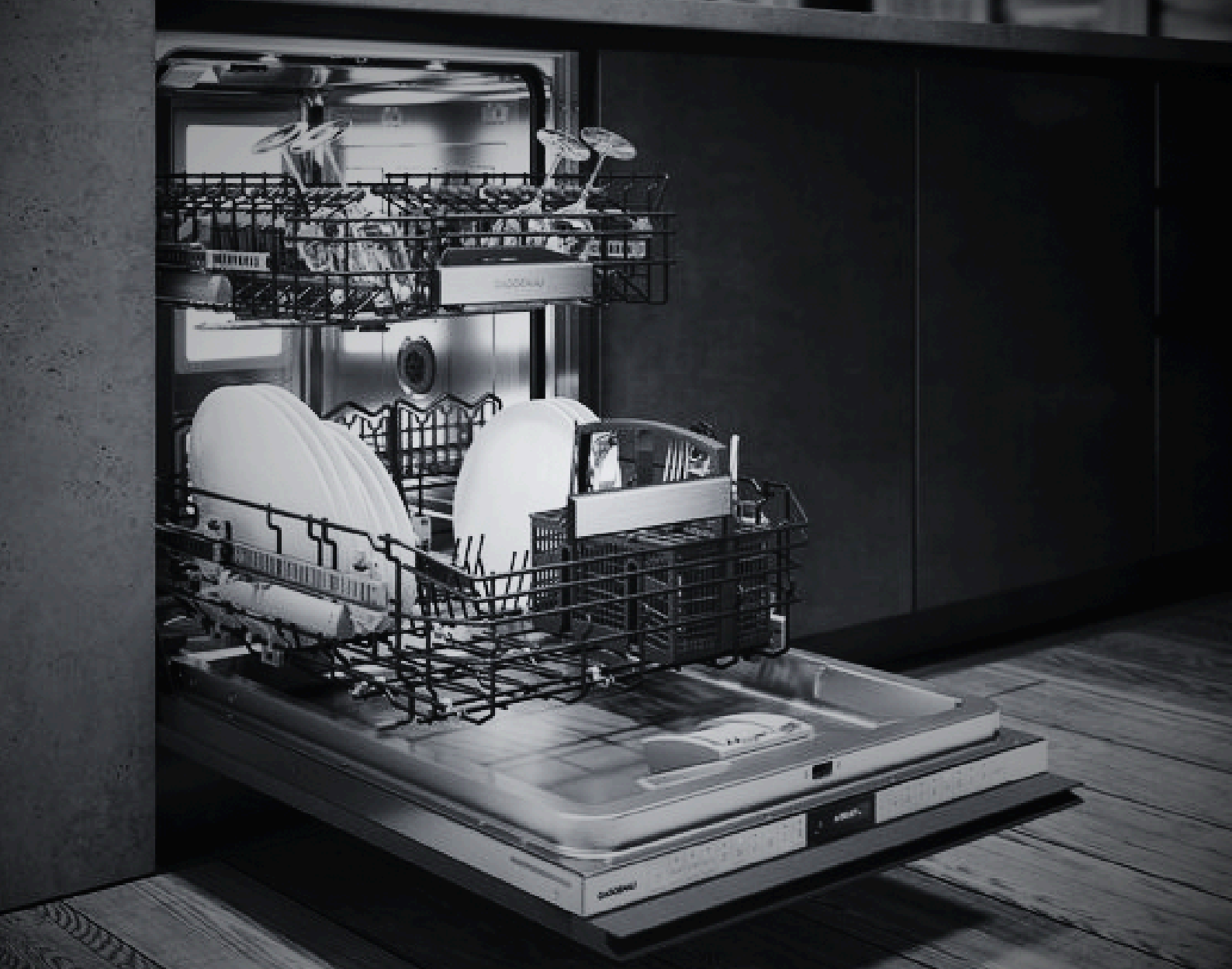
- Dryer: 8kg net
- Heat pump technology: A++
- Energy efficiency class: A++
- Drum volume: 112 T
- Black outer door ring
- Dark silver color
- UK plug
- Sensor drying system
- Two way tumbling
- Control system: electronic
- Failure detection system
- Child lock
- Drying cycle indicator
- Delay time adjustment via button
- Drying level adjustment via button
- Spin speed selection
- Display LED (7-segment)
- Remaining time
- Delay timer 1-23 h
- Filter full indicator
- Water tank full indicator
- Condenser cleaning indicator
- End of cycle buzzer
- Buzzer cancel function
- Automatic anti-creasing function
- Drum light
- Number of program knob: 15
- Door diameter: 51 cm
- Condensation efficiency class: A
- Voltage V / Frequency (Hz) 220-240V / 50-60 Hz
- Power Rating: 1000W
- Unpacked product dimension: 845H x 596W x 609D
- Net Weight: 44,3 Kg
- Container load quantities 40 HC: 162 pcs

WASHER & DRYER TW/D96-14W/V



Features

- Washer & dryer machine
- Inverter motor
- 9 Kg wash – 1400 rpm & 6 Kg dryer
- Drum volume: 6l Lt
- Number of programs on program knob: 15
- Wide opening door
- Door diameter [cm]: 47
- Pump with filter
- Drum material: stainless steel
- Power rating [W]: 2200
- 220/240V – 60/50 Hz
- Shuko plug
- Loading capacity 40 HC: 159 PCS



DISHWASHER



THOMSON

DISHWASHER TA1D/IX



Features

- Free standing dish washer
- Capacity: 13ps
- Program number: 5 programs
- Color: inox look
- Display: LED, color: red
- Delay timer
- Half load option (eco wash)
- Energy class: A++
- Drying: mini drying
- Basket color: grey basket
- Water consumption: 12L
- Upper basket specs: 2 adjustable mug shelves
- Power of washing pump (W): 100
- Power of drain pump (W): 30
- Product dimensions (HxWxD)cm: 85,0 x 59,8 x 59,8
- Gross/net weight (kg): 49 / 46
- Container loading: 40"HC – (carton boxed) 162 / 153

DISHWASHER TF43IX



Features

- 15 PS (2 baskets + 3rd rack) included + turbo fan
- Color: INOX
- Energy efficiency class (1059/2010): A+++
- Number of programmes: 10
- Water sprayers in base machine: 2
- Control type: touch control
- Main filter type: metal
- Tub material: stainless steel
- Turbidity sensor (smart wash)
- Drying system turbo
- Overflow & leakage protection
- Heater protection
- Circulation pump BLCD
- Energy efficiency class (2019/2017): D
- Eco programme energy cons. (kWh/cycle) (2019/2017) 0,861
- Plug type UK
- Height x width x depth (cm): 85,0x59,8x59,8
- Gross/Net weight (kg): 57/55 - 64/62
- Container loading (40"HC): 162



REFRIGERATORS



THOMSON

REFRIGERATORS

TBCD-458W REFRIGERATOR

SPECIAL BUILT IN



Features

- Door shape: flat door
- Noise: 36 dB
- Net capacity: 458 L
- Fridge net capacity: 272 L
- Freezer net capacity: 186 L
- Dimension: WDH (mm) 846x600x1850
- Temperature control: electronic
- Cooling system: no frost
- Star rating: 4 star
- Color: VCM stainless steel look door
- Handle: integrated
- Climate class: T
- Compressor type: LG

REFRIGERATORS

TBCD-485W REFRIGERATOR

SPECIAL BUILT IN



Features

- Door shape: flat door
- Noise: 36 dB
- Net capacity: 485 L
- Fridge net capacity: 318 L
- Freezer net capacity: 167 L
- Dimension: WDH (mm) 846x600x1935
- Temperature control: electronic
- Cooling system: no frost
- Star rating: 4 star
- Color: VCM stainless steel look door
- Handle: integrated
- Climate class: T
- Compressor type: LG

REFRIGERATORS

TBCD-424W REFRIGERATOR

SPECIAL BUILT IN



Features

- Door shape: flat door
- Noise: 36 dB
- Net capacity: 424 L
- Fridge net capacity: 282 L
- Freezer net capacity: 142 L
- Dimension: WDH (mm) 769x600x1935
- Temperature control: electronic
- Cooling system: no frost
- Star rating: 4 star
- Color: VCM stainless steel look door
- Handle: integrated
- Climate class: T
- Compressor type: LG

REFRIGERATORS

T343S



Features

- Total capacity: 311 Lt
- Fridge compartment: 240 Lt
- Freezer compartment: 71 Lt
- No frost multicooling tech
- Voltage/frequency: 220~240/50Hz
- Climate class: T/SN
- Energy efficiency: A+
- Refrigerant/charge: R600a
- Shelf (material/no.): glass
- Door balcony (material/no./colour): PS/5/transparent
- Vegetable crisper cover: glass/1
- Vegetable crisper (material/no./colour): plastic/2/transparent
- Control type: EHT
- Eggs holders
- Inside colour: white
- Freezing compartment star: 4 star : -18°C
- Ice box: 1
- Product (WxDxH) (mm): 590x650x1720
- Loading quantity (40 HC): 76 pcs

REFRIGERATORS

T473S



Features

- Total capacity: 435 Lt
- Fridge compartment: 337 Lt
- Freezer compartment: 98 Lt
- Control type: e
- Defrosting: automatic
- Voltage/frequency: 220~240/50Hz
- Climate class: T/SN
- Energy efficiency: A+
- Refrigerant/charge: R600a
- Shelf (material/no.): glass/2
- Door balcony (material/no./colour): PS 5 transparent
- Vegetable crisper cover: glass/1
- Vegetable crisper (material/no./colour): plastic/2/transparent
- Eggs holders
- Inside colour: white
- Freezing compartment star: 4 star : -18°C
- Max storage time (h): 15
- Shelf (material/no.): glass/1
- Product (WxDxH) (mm): 700x720x1830
- Loading quantity (40 HC): 70 pcs

REFRIGERATORS

T543S



Features

- Total capacity: 524 Lt
- Fridge compartment: 400 Lt
- Freezer compartment: 124 Lt
- Control type: e
- Defrosting: automatic
- Voltage/frequency: 220~240/50Hz
- Climate class: T/SN
- Energy efficiency: A+
- Energy consumption (kWh/24h): 1.0
- Refrigerant/charge: R600a
- Shelf (material/no.): glass/2
- Door balcony (material/no./colour): PS 6 transparent
- Vegetable crisper cover: glass/1
- Vegetable crisper (material/no./colour): plastic/1/transparent
- Eggs tray(s): 1
- Inside colour: white
- Freezing compartment star: 4 star : -18°C
- Freezing capacity (Kg/24h): 5,5
- Max storage time (h): 15
- Ice box: 1
- Product (WxDxH) (mm): 760x750x1860
- Loading quantity (40 HC): 60 pcs

REFRIGERATOR SIDE BY
SIDE
**TBCD-523W INVERTER
COMPRESSOR**

Features

- Cooling system: no frost
- Star rating: 4 star
- Product dimensions (WxDxH) (mm): 836x706x1830
- Effective capacity: 489 Lt / 162 Lt for freezer part
- Shelf/drawer: 3 glass shelves, 2 drawers in fridge compartment, 2 drawers in freezer compartment, 6 balconies on fridge compartment.
- Features: door opening alarm mode, electronic control with LED display, with super freezing and super cooling function, the adjustable shelf enables you to full utilize storage space, LED light, child lock mode, ice tray, holiday function, wheels n.4.
- Compressor type: LG/Danfoss
- Colour: VCM stainless steel look door
- Handle: integrated
- Type of refrigerant: R600a
- Energy label: A+
- Climate class: T
- Gross/Net weight: 115/105 Kg
- Loading quantity (40 HC): 51pcs



REFRIGERATOR SIDE BY SIDE

**TBCD-606WHIT INVERTER
COMPRESSOR**

Features

- Cooling system: no frost
- Star rating: 4 star
- Product dimensions (WxDxH) (mm): 911x706x1780
- Effective capacity: 541 Lt / 169 Lt for freezer part
- Shelf/drawer: 4 glass shelves on freezer compartment and 4 glass shelves on fridge, 4 balcony on fridge compartment and 2 on freezer.
- Features: door opening alarm mode, electronic control with LED display, with super freezing function, spill proof shelf, child lock mode, LED light, automatic ice-maker holiday function.
- Colour: PCM SS look door
- Handle: Integrated
- Type of refrigerant: R600a
- Energy label: A+
- Climate class: T
- Gross/Net weight: 118/107 Kg
- Loading quantity (40 HC): 48 pcs



REFRIGERATOR SIDE BY
SIDE
**TBCD-585W INVERTER
COMPRESSOR**

Features

- Cooling system: no frost
- Star rating: 4 star
- Product dimensions (WxDxH) (mm): 911x706x1830
- Effective capacity: 542 Lt / 175 Lt for freezer part
- Shelf/drawer: 3 glass shelves, 2 drawers in fridge compartment, 4 drawers in freezer compartment.
- Features: door opening alarm mode, electronic control with LED display, with super freezing and super cooling function, the adjustable shelf enables you to full utilize storage space, LED light, child lock mode.
- Colour: PCM SS look door
- Handle: integrated
- Type of refrigerant: R600a
- Energy label: A+
- Climate class: T
- Gross/Net weight: 108/98 Kg
- Loading quantity (40 HC): 48 pcs



REFRIGERATOR SIDE BY SIDE

TNF 375

Features

- No frost cooling tech
- Door alarm
- Head panel display
- Humidity controlled crisper
- Adjustable door racks
- Adjustable tempered glass shelves
- Egg holders
- Transparent accessories
- Reversible doors
- Leveling feet
- Rear rollers
- Fridge LED lighting
- Product dimensions (WxDxH) (mm): 595x650x1860
- Volume total: 404 gross Lt
- Energy class A++
- Loading quantity (40 HC): 72 pcs



UP RIGHT FREEZER

TNF 371

Features

- Refrigeration system: no frost
- Control system: electronic
- Climatic class: T/SN
- Energy class: A+; Energy class: A++
- Performance (star rating): 4
- Volume total (gross) (L): 307
- Energy consumption (kWh/24h): 0.898
- Freezing capacity (Kg/24h): 21
- Defrost system type frigde/freezer: automatic
- Product dimensions (WxDxH) (mm): 595X650X1860
- Refrigerating gas: R600A
- Loading quantity (40 HC): 72 pcs





GAS COOKERS



THOMSON

GAS COOKERS

T100BGGG/FS

Features

- Free-standing kitchen 100x60x85 cm
- Stainless steel
- Semi-professional flat squared by 4 cm
- 5 gas burners (including central triple crown)
- Cast iron grids
- Automatic ignition integrated inside the knob
- Mechanical timer
- Gas oven with thermostat
- Gas grill with separate command (single command for Jordan)
- Safety valves all burners plus oven and grill
- Rotisserie
- Panoramic oven door with 3 glasses
- Mirror colour glass
- Oven light
- Internal equipment 2 grids and 1 tray
- Height adjustable feet
- Loading capacity (40 HC): 102 pcs
- Available in red, silver and black colours
- Anti-fingers print



GAS COOKERS

T95BVC-S

Features

- Free-standing kitchen 90x60x85 cm
- Stainless steel
- Semi-professional flat squared by 4 cm
- Glass ceramic top with 5 hi-light elements:
 - 2x145 mm. 2x180 mm. 1 double zone x 210-140 mm
- Touch control digital timer
- Multifunction electric oven with 8 functions
- Tangential cooling fan
- Panoramic oven door with 3 glasses
- Mirror colour glass
- Oven light
- Oven with side grill supports
- Internal equipment: 2 grids and 1tray
- Height adjustable feet
- Loading capacity (40 HC): 123 pcs
- Anti-fingers print



GAS COOKERS

T95BPGGS/FS

Features

- Free-standing kitchen 90x60x85 cm
- Stainless steel
- 5 gas burners (including central triple crown)
- Cast iron grids
- Cooking fan
- Automatic ignition integrated inside the knob
- Glass lid
- Mechanical timer
- Gas oven with thermostat
- Gas grill with separate command (single command for Jordan)
- Safety valves all burners
- Rotisserie
- Panoramic oven door with 2 glasses
- Mirror colour glass
- Oven light
- Internal equipment 1 grid and 1 tray
- Height adjustable feet
- Anti-fingers print
- Loading capacity (40 HC): 123 pcs

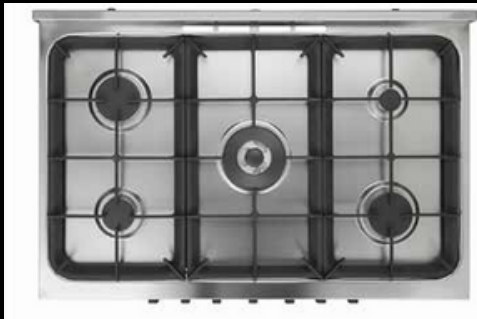
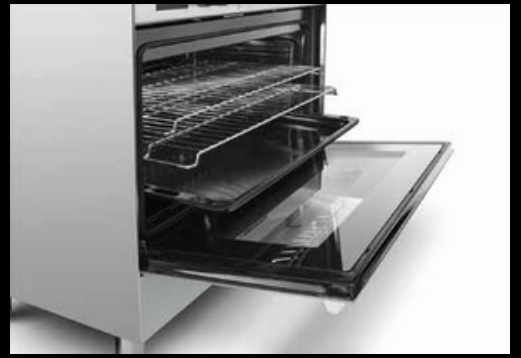


GAS COOKERS

GAS COOKER
T95BPGGS/FS

GAS COOKER
T95BGCSSB/FS

" Experience
a real
ITALIAN KITCHEN "



THOMSON

GAS COOKERS

T95BPGGSB/FS

Features

- Free-standing kitchen 90x60x85 cm
- Stainless steel
- 5 gas burners (including triple central crown) with safety valves
- Matt black grids
- Automatic ignition integrated inside the knob
- Black knobs + black rosettes
- Glass lid
- Mechanical timer
- Gas oven with thermostat
- Gas grill with separate control
- Safety valves all burners
- Rotisserie
- Oven door with 2 glasses
- Black external glass
- Oven light
- Deep drawn oven sides
- Internal equipment 1 grill and 1tray
- Height-adjustable feet in black
- Loading capacity (40 HC): 123 pcs
- Anti-fingers print



GAS COOKERS

TF9060D/LUX

Features

- 90x60 Full gas free-standing cooker
- Top 5 gas euro pool type burners – Middle burner as dual wok 5 kW by Sabaf - MADE IN ITALY – Flame failure devices for top 5 gas burners (FULL SAFETY)
- Cast iron pan supports
- Made in Italy by cast futura gas oven & gas grill with double knobs separately and flame failure devices and thermostat
- Internal cooling fan system
- Double turbo fans
- Glass top lid frontal profile
- Turnspit (chicken rotisserie)
- Triple glass oven door
- Inner oven door glass as thermal reflection (Low-E)
- LED touch digital timer
- Oven lamp
- One hand integrated automatic ignition for top 5 gas burners
- One hand integrated automatic ignition for gas oven & gas grill



GAS COOKERS

TF9060DM/LUX

Features

- 90x60 Full gas free standing cooker
- Top 5 gas euro pool type burners
- Middle burner as dual wok 5 kW by Sabaf - MADE IN ITALY
- Left frontal burner as dual wok 5 kW by Sabaf - MADE IN ITALY
- Right back side burner as triple wok as 2,5 kW by Sabaf - MADE IN ITALY
- Flame failure devices for top 5 gas burners (FULL SAFETY)
- Cast iron pan supports
- Rectangular cast iron pan for grilling
- Made in Italy by cast futura gas oven & gas grill with double knobs separately and flame failure devices and thermostat
- Internal cooling fan system - Double turbo fans - Glass top lid frontal profile - Turnspit (chicken rotisserie) - Triple glass oven door - Soft close oven door - Flotal mirror oven door outer glass
- LED touch digital timer - Oven lamp - One hand integrated automatic ignition for top 5 gas burners - One hand integrated automatic ignition for gas oven & gas grill - Frontal matt stainless steel & sides silver color painted body



GAS COOKERS

TF9060EM

Features

- 90x60 Full gas free standing cooker
- Top 5 gas euro pool type burners
- Middle burner as dual wok 5 kW by Sabaf - MADE IN ITALY
- Left frontal burner as dual wok 5 kW by Sabaf - MADE IN ITALY
- Right back side burner as triple wok as 2,5 kW by Sabaf - MADE IN ITALY
- Flame failure devices for top 5 gas burners (FULL SAFETY)
- Cast iron pan supports
- Rectangular cast iron pan for grilling
- Made in Italy by cast futura gas oven & gas grill with double knobs separately and flame failure devices and thermostat
- Internal cooling fan system - Double turbo fans - Glass top lid frontal profile - Turnspit (chicken rotisserie) - Triple glass oven door - Soft close oven door - Stainless steel rectangular frame on oven door outer glass - Flotal mirror oven door outer glass - Mechanical timer - Oven lamp - One hand integrated automatic ignition for top 5 gas burners - One hand integrated automatic ignition for gas oven & gas grill - Frontal matt stainless steel & sides silver color painted body



GAS COOKERS

TF9060E

Features

- 90x60 Full gas free standing cooker
- Top 5 gas euro pool type burners
- Middle burner as dual wok 5 kW by Sabaf - MADE IN ITALY
- Flame failure devices for top 5 gas burners (FULL SAFETY)
- Cast iron pan supports
- Made in Italy by cast futura gas oven & gas grill with double knobs separately and flame failure devices and thermostat
- Internal cooling fan system - Double turbo fans - Glass top lid frontal profile - Turnspit (chicken rotisserie) - Triple glass oven door - Inner oven door glass as thermal reflection (low-e) - Mechanical timer - Oven lamp - One hand integrated automatic ignition for top 5 gas burners - One hand integrated automatic ignition for gas oven & gas grill - Frontal matt stainless steel & sides silver color painted body



GAS COOKERS TGC-96S DELUXE

Features

- Dimension: 90x60 cm
- Top 5 gas pool burners
- Middle triple wok burners
- Full safety
- Automatic ignition integrated inside the knob
- Silver colour knobs and alluminum handles
- Gas oven and gas grill with separate knobs and flame failure devices
- Digital display
- Close door function
- Sabaf Burners
- Mirror oven door
- Cast iron pan support
- Up and down gas oven
- Limit thermostat control
- Glass top lid front profile
- Digital timer
- Automatic ignition
- Turnspit
- Loading capacity (40 HC): 123 pcs



GAS COOKERS

TGC-60W

Features

- Gas cooker 60x60 cm
- Full gas free standing
- 4 Gas burners full safety
- White colour and white aluminium handle
- Available also silver color
- Gas oven & gas grill with double knobs control separately
- Flame failure device for gas oven & gas grill
- Glass top lid
- Double glass oven door
- Oven lamp & push button ignition for top 4 gas burners
- Available also with full stainless steel
- Double layer brown glass
- Adjustable feet
- Defendi burners
- Double glass on the oven door
- Loading capacity (40 HC): 182 pcs





THOMSON